

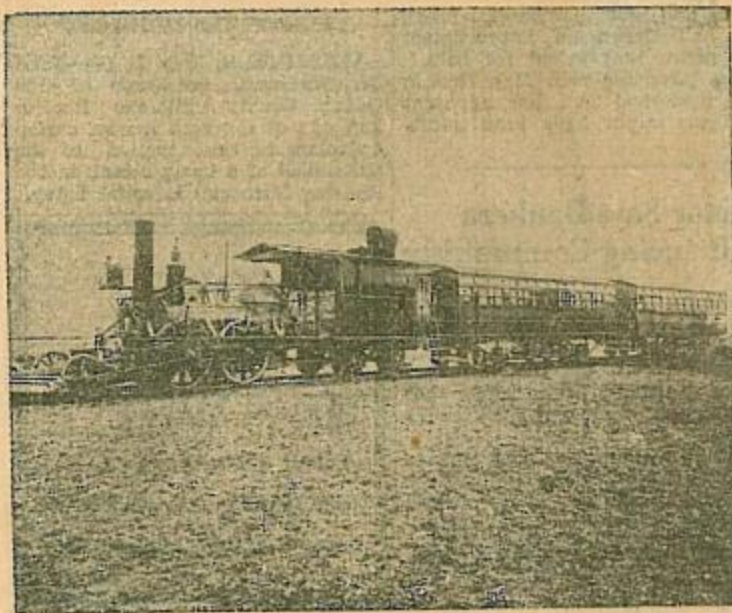
"People were conservative in those days. They had never before traveled 30 miles without eating or 10 without drinking. They had been accustomed to exchanging views and compliments and gathering the latest news and gossip at each tavern where horses were changed. Racing across the open country at 20 miles per hour, was well enough, but to pass such places as New Brunswick, with its Rutgers College, or Trenton, with its capitol, was unthinkable. Traveling to them was not simply transportation.

Rocking Chairs in Coaches

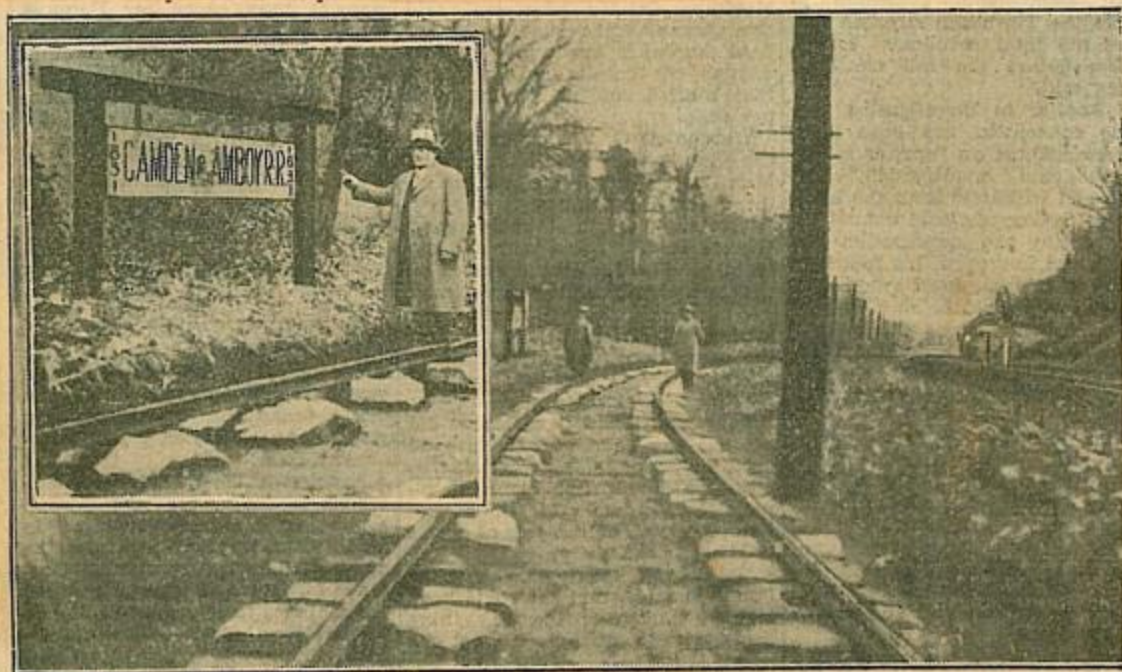
"It meant pleasure, which they were loath to forego—for even in 1840 the Camden and Amboy Railroad had several styles of passenger cars, including two which were equipped with rocking chairs, a feature which received much contemporary world wide comment.

"From the first experiment the development of railroads has been steady. The turnpike and canal era has passed. The railway era promises to be a long one, although other means of transportation have been found which as yet have scarcely any history at all. Since colonial days the velocity of observation has increased 20-fold or more. One's range of observation has expanded accordingly, but do we observe as accurately? Is our reflection keeping pace with our opportunities for seeing and knowing? If not the America of the future may shortly drift away from the America of our constitution and tradition."

Two-hundred years ago Raritan Landing was a grassy meadow upon which cows grazed peacefully. One hundred years later the landing had become a flourishing shipping center. Another 100 years pass. New Brunswick has become an industrial city of the first magnitude. On Raritan Landing, the cows are again grazing peacefully. All because of a railroad!



The John Bull, America's oldest complete locomotive, which played an important part in the early days of railroading. This type of engine was used both on the New Jersey Railroad operating to this city but also on the Camden and Amboy road, the oldest railroad in the state.



The large picture above shows the spot on the Amboy Branch of the Pennsylvania Railroad near Jamesburg where a portion of the original rails laid in 1831 when the Camden and Amboy Railroad was constructed. This was the first railroad built in the state. The inset at the right shows the old rail and a sign erected over it in 1931 a century after it was laid.