

BENCH *and* BAR of NEW JERSEY

1942

JUDICIARY

CHANCELLOR LUTHER A. CAMPBELL



Chancellor Luther A. Campbell was born in Bergen County, New Jersey, on November 28, 1872.

He studied law in the office with his father, the late Abraham D. Campbell. Admitted to the Bar in February, 1894.

Upon his admittance to the Bar, he and his father formed a partnership under the name of A. D. and L. A. Campbell, which continued until his father's death in November, 1896.

He was appointed a part term Circuit Judge on January 6, 1914, and on January 20, his name was sent to the Senate by the Governor for a full term of office, and he was reappointed in 1921.

On November 20, 1923 he resigned as Circuit Court Judge to accept a part term appointment as Supreme Court Justice to succeed the late Justice Bergen. In 1924 he was renamed for a full term of seven years, and in 1931 he was again reappointed.

Judge Campbell resigned on October 15, 1932, as an Associate Justice of the Supreme Court to accept the office of Chancellor to which he was appointed on that day by Governor A. Harry Moore. He was later appointed for a full term, and reappointed again on October 18, 1939.

On January 6, 1939, he completed 25 years continuous service as a member of the Judiciary, first as Circuit Court Judge, then Associate Justice of the Supreme Court and finally as Chancellor.

Chancellor Campbell lives at Hackensack, New Jersey.

CHIEF JUSTICE THOMAS J. BROGAN

Chief Justice Thomas J. Brogan was graduated from the College of St. Francis Xavier, New York City in 1909, with an A.B. degree and from Fordham University Law School in 1912, where he received his LL.B. degree. He was admitted to the Bar of New Jersey in November, 1912.

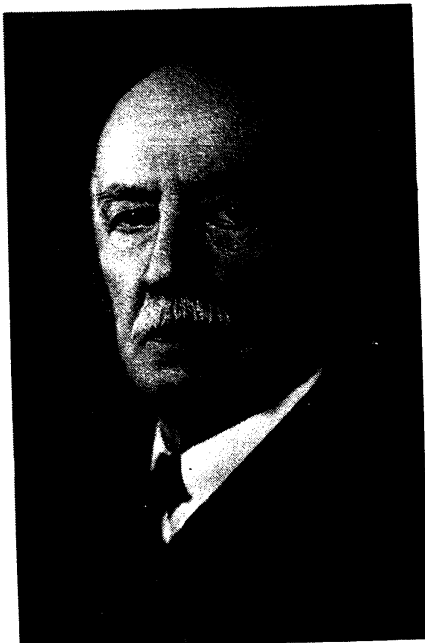
Chief Justice Brogan has always been engaged in the practice of law in Jersey City.

He was appointed as Associate Justice of the Supreme Court of New Jersey by Governor Moore on April 25, 1932, and this appointment was confirmed by the Senate the following day. He became Chief Justice in 1933, and at the expiration of his term in 1941, was reappointed to this office.

Chief Justice Brogan resides in Jersey City and has his chambers at 15 Exchange Place, Jersey City.



JUSTICE CHARLES W. PARKER



Justice Charles W. Parker was born at Newark, New Jersey, on October 22nd, 1862; the son of the late Cortlandt and Elizabeth W. (Stites).

He received his early education at Pingry School, Elizabeth, New Jersey, and Phillips Exeter Academy, Exeter, New Hampshire. He was graduated from Princeton College with honors in 1882; read law under his father and at Columbia Law School from 1882 to 1885; and holds the degrees: A.M. from Princeton, 1885; LL.B. from Columbia, 1885; LL.D. Princeton, 1919; LL.D. New Jersey Law School, 1934, and Mercer Beasley Law School, 1935. Admitted to the New Jersey Bar as an attorney in June, 1885, and as a counsellor in February, 1890.

Justice Parker began the practice of law in Newark, where he continued until 1890, later in Bayonne City, and after 1891 he was located in Jersey City.

In 1898 he was appointed a District Court Judge for Jersey City, and reappointed in 1903. He resigned that office in 1903 to accept the appointment as Judge of the Circuit Court. He held this office until 1907 when he resigned to become a Justice of the Supreme Court. After a term of seven years, he has been appointed each succeeding term. His present term will expire in 1942.

In 1924, Justice Parker was appointed by the Bishop as Chancellor of the Protestant Episcopal Diocese of Newark for a term of three years, and reappointed in 1927, 1930, 1933, 1936 and 1939.

Justice Parker was one of the charter members of the Essex Troop of Newark, and served as Private, Corporal and Sergeant in that troop from its organization in 1890 until December 1899, when he was made a First Lieutenant, and later a Captain in the Fourth Regiment of Jersey City, resigning in 1902 to accept the appointment of Assistant Adjutant General of the state with rank of Lieutenant Colonel, resigning in 1907 when he was appointed to the Supreme Court. He was an aide-de-camp on the staff of Governor Murphy from 1902 to 1905.

Justice Parker is past President of New Jersey Historical Society. In politics he is a Republican.

Justice Parker's home is at 63 Macculloch Avenue, Morristown, and he has his office at 19 South Street, Morristown.

JUSTICE CLARENCE EDWARDS CASE

Justice Clarence Edwards Case was born in Jersey City, New Jersey, on September 24, 1877; the son of Philip and Amanda V. (Edwards).

He received his B.A. degree at Rutgers College, New Brunswick, New Jersey, in 1900, (Phi Beta Kappa), and his Master's degree there in 1903. He graduated from New York Law School in 1902 with an LL.B.; and in 1937 Rutgers conferred on him the degree of LL.D. He entered the office of Alvah A. Clark, Somerville, New Jersey, in 1902, and was admitted to the Bar of New Jersey as an attorney in 1903, and as a counsellor in 1907. He was a member of the firm of Clark and Case from 1906 to 1910. He served as a clerk of the judiciary committee, New Jersey Senate during 1908 and 1909, and was secretary to the President of the New Jersey Senate during 1909 and 1910.

He became Judge of Somerset County Courts in 1910 but resigned in 1913 to resume private practice.

He was a member of the New Jersey Senate from 1918 to 1929; was acting Governor of New Jersey in 1920 during a portion of the interim following the resignation of Governor Edge and the inauguration of Governor Edwards; and has been a Justice in the New Jersey Supreme Court since 1929. He is a Trustee of Rutgers University.

Justice Case is a member of Somerset County, New Jersey State, and American Bar Associations. He is also a member of the Reformed Church in America; a Republican; a Mason; Knights of Pythias; University Club of New York; and the Raritan Valley Country Club. He was married on January 29, 1913 to Anna Gist Rogers, who died November 28, 1922. They had three children: Henrietta Rogers, Clarence Edwards and Philip. He was married a second time, on July 25, 1925, to Mrs. Ruth Weldon Griggs, and they reside at Somerville, New Jersey.



JUSTICE JOSEPH LAMB BODINE

Justice Joseph Lamb Bodine, the son of Dr. Joseph L. and Frances P. (Davis) Bodine, was born at Trenton, New Jersey, on November 6, 1883.

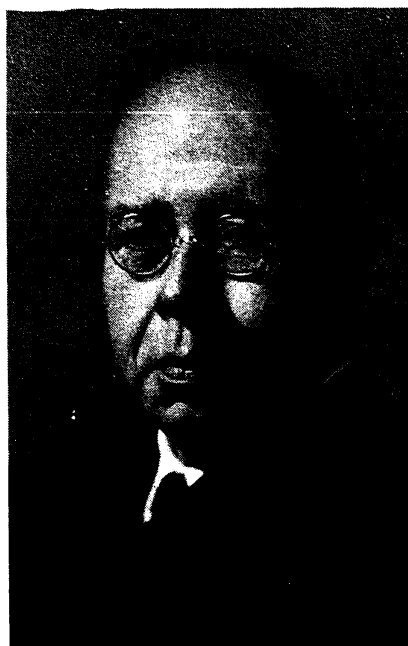
He received his A.B. degree at Princeton University in 1905, and his LL.B. at Harvard in 1908.

Justice Bodine began the practice of law at Trenton, New Jersey, in 1908.

During 1919 and 1920 he was United States District Attorney for the District of New Jersey; was United States District Judge for the same District from 1920 to 1929; and has been a Justice of the New Jersey Supreme Court since 1929.

He is a Democrat, Presbyterian and a member of the Trenton Country Club.

Justice Bodine married Gertrude Scudder on December 24, 1918, and they have one son, John W. They reside at 146 West State Street, Trenton, New Jersey.



JUSTICE RALPH W. E. DONGES

Justice Ralph W. E. Donges was born May 5, 1875, at Donaldson, Pennsylvania; the son of Dr. John W. and Rose (Renaud) Donges.

He received his early education in the public schools and from private tutors; and graduated from Rugby Academy at Philadelphia, Pennsylvania in 1892. He holds the degree of LL.D. Admitted to the Bar of New Jersey in February 1897, and has been a counsellor-at-law since 1900.

He held the office of Judge, Circuit Court of New Jersey from 1920 to 1930, and has been Associate Justice of the Supreme Court of New Jersey since 1930.

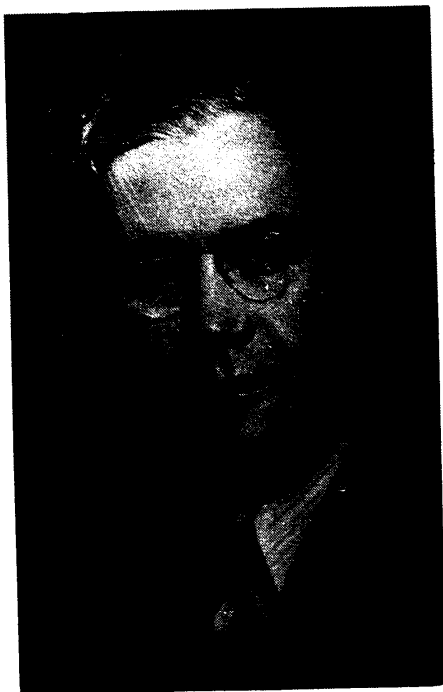
He served as a Lieutenant Colonel in the United States Army during 1918 and 1919, and is active in fraternal organizations and public affairs.

Justice Donges is a member of Camden County, New Jersey State, and American Bar Associations. He also is an Episcopalian; Mason, 32nd degree, Excelsior Consistory; Moose and Elks.

In 1921, he was married to Lillian L. Mosebach and they reside at the Walt Whitman Hotel, Camden, New Jersey. Justice Donges has his office in the Court House Annex, Camden.



JUSTICE HARRY HEHER



Justice Harry Heher was born at Trenton, New Jersey on March 20, 1889; the son of John and Anne (Spelman).

He received his early education at the Cathedral School and Trenton High School, and studied law privately. Admitted to the New Jersey Bar in 1911.

He practiced law in Trenton until 1932 when he was appointed Associate Justice of the New Jersey Supreme Court to fill an unexpired term, and in 1933 received the appointment for a full term of seven years, and in 1940, he was reappointed for a second term.

Justice Heher was a delegate to the Democratic national conventions in 1924, 1928 and 1932, being chairman of the state delegation in 1928 and 1932.

He is a member of Mercer County and New Jersey State Bar Associations; New Jersey Historical Society and a Catholic.

Justice Heher married Anne Egan on August 5, 1925, and they have three sons: Harry, John Robert and Garrett Martin. The family home is at 42 Perdicaris Place, Trenton, New Jersey; and Justice Heher has his chambers in the State House Annex, Trenton.

JUSTICE JOSEPH B. PERSKIE

Justice Joseph B. Perskie was born at Alliance, New Jersey, on July 20, 1885; the son of Harris and Minnie (Levit).

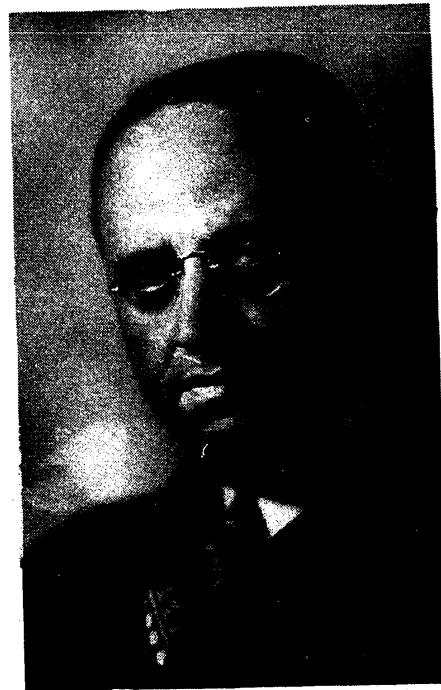
He was a student at the University of Pennsylvania Law School from 1904 to 1907. Admitted to the Bar of New Jersey in 1907 as an attorney and as a counsellor in 1910.

He has been Justice of the Supreme Court of New Jersey since 1933; and from 1930 to 1933 was a member of the Commission for Uniform Legislation in the United States.

He is a director of the Federation of Jewish Charities, Atlantic City, New Jersey.

Justice Perskie is a member of Atlantic County, and New Jersey State Bar Associations; a Republican and of Jewish religion. He is also a member of B'nai B'rith, Elks, Eagles, Moose; and a member of the Country Club, Linwood, New Jersey.

On November 27, 1910, he married Beatrice Maslansky; and they have three sons: David M., Marvin and Lawrence. Justice Perskie's home is at 5 North Plaza Place, Atlantic City, New Jersey.



JUSTICE NEWTON HAZELTON PORTER

Justice Newton Hazelton Porter, son of Edward Baldwin and Emma Jane (Hazelton), was born at Somerville, New Jersey, on April 13, 1877.

He attended evening school at New York University where he was graduated in 1902, receiving the degree of LL.B. Admitted to the New Jersey Bar as an attorney in 1904 and as a counsellor in 1907.

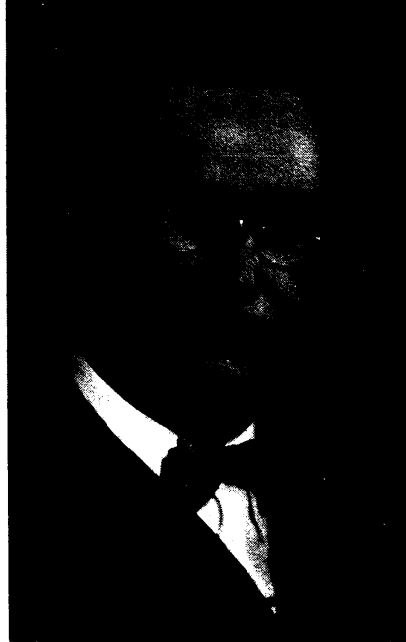
Prior to the time Mr. Porter took up the study of law, he was employed in the United States Internal Revenue Office in Newark, New Jersey, and where he advanced from office boy to the position of chief deputy (1889 to 1910).

He was engaged in the practice of law from 1910 to 1924, when he was appointed Judge of the Court of Common Pleas, Essex County, New Jersey. He held this office for two years, and in 1926 became Judge of the Circuit Court where he continued until 1938. He has been Justice of the Supreme Court of New Jersey since 1938.

Justice Porter served on the Montclair Board of Education from January to April, 1924; and was President of the New Jersey State Chamber of Commerce from 1921 to 1923.

He is a member of Essex County, New Jersey State, and American Bar Associations; a Republican; Episcopalian.

On June 15, 1904, Justice Porter married Alice Bodine Chamberlain; and their children are: Newton H., Jr., Elizabeth B. (Mrs. William H. Seyfert); Eleanor C. (Mrs. Alfred P. Degenhardt); Catherine A. (Mrs. W. Paul Bowden); and Richard D. The family home is at 337 Grove Street, Montclair, New Jersey. Justice Porter has his chambers at 46 Church Street, Montclair.



JUSTICE FREDERIC RUNYON COLIE

Justice Frederic Runyon Colie, Justice of the New Jersey Supreme Court, was born at East Orange, New Jersey, on May 4, 1895; the son of Edward Martin and Caroline (Runyon).

Following his early education at Lawrenceville School, Lawrenceville, New Jersey, he entered Dartmouth College, Hanover, New Hampshire, graduating with a B. S. degree; and received his legal training at New York University and the New Jersey Law School. Admitted to the Bar of New Jersey at the February term, 1922.

Justice Colie was associated with the firm of Edward M. and Runyon Colie from 1924 to 1931; from 1931 to 1936 the firm was known as Colie and Colie, and from 1936 to 1941 as Colie and Schenck. Appointed Associate Justice New Jersey Supreme Court, February 3, 1941.

He is a member of Essex County, New Jersey State, and American Bar Associations. He is also a member of the Down Town Club of Newark, New Jersey; Short Hills Club of Short Hills, New Jersey; and the Tuscarora Club of Arene, New York; as well as the Alpha Delta Phi and Phi Delta Phi fraternities.

Justice Colie married Rosalie Littell Hall in 1922, and they have two children: Rosalie Littell, born in 1924; and Frederic Runyon, Jr., born in 1929. The Colie home is at 51 Woodcrest Avenue, Millburn, New Jersey.



JUDGE JOSEPH A. DEAR

Honorable Joseph A. Dear was born in Jersey City, New Jersey, on November 23, 1871.

He was graduated from Princeton University in 1893.

On November 15, 1926, he was appointed as a Republican to the Court of Errors and Appeals by Governor Moore, who reappointed him to a second six-year term beginning November 15, 1932. He was reappointed for a third term which will extend to November 15, 1944.

Judge Dear is the editor and one of the publishers of the Jersey Journal in Jersey City, and is a trustee and the Treasurer of the Jersey City Free Public Library, and is officially connected with several of the charitable organizations of that city, where he resides.

Office: No. 306-30 Journal Square, Jersey City, New Jersey.

JUDGE HAROLD B. WELLS

Honorable Harold B. Wells was born at Pemberton, New Jersey, on February 23, 1876.

He was educated at the Pemberton Public School, Peddie Institute, Hightstown, and Princeton University. After graduating from Princeton, he studied law, and was admitted to the New Jersey Bar as an attorney in 1902, and as a counsellor in 1909.

Judge Wells served for five years as State Senator and five years as Judge of the Common Pleas of Burlington County. In 1930 he was appointed Special Judge of the Court of Errors and Appeals; and reappointed in 1936 to the Court of Errors and Appeals.

Office: Park Street, Bordentown, New Jersey.



JUDGE WILLIAM D. WOLFSKEIL

Honorable William D. Wolfskeil was born at Elizabeth, New Jersey.

He was educated in the public schools.

He is an attorney and counsellor-at-law.

Judge Wolfskeil was appointed a Supreme Court Commissioner in 1904, and a Special Master in Chancery in 1917, and served as Surrogate of Union County in 1933, filling a vacancy.

On June 25, 1935, he was appointed to the Court of Errors and Appeals for a six-year term and again in 1941.

Judge Wolfskeil is a member of Union County (President for three terms), New Jersey State, and American Bar Associations.

He resides in Elizabeth, New Jersey. Offices: 1143 E. Jersey Street, Elizabeth, New Jersey.



JUDGE JOHN J. RAFFERTY



Honorable John J. Rafferty was born in Brooklyn, New York, on April 17, 1896, and moved to New Jersey with his parents in 1905.

He attended the public schools of Brooklyn, and Piscataway Township, now Middlesex Borough, Middlesex County, New Jersey. Later he entered the New York Preparatory School, New York City, for evening study in order to acquire the equivalent of a high school education. Later Mr. Rafferty studied law at the law school of Fordham University, which course was completed in 1926. He served his law clerkship in the office of the Honorable Feed W. DeVoe at New Brunswick, New Jersey, and was admitted to the New Jersey Bar as an attorney in 1929.

Judge Rafferty served as a member of the Board of Education of Middlesex Borough for four years, and in 1933 was elected Mayor of that Borough. In 1934 he was elected chairman of the Middlesex County Democratic Committee.

In 1930 he was elected to the Assembly, and was re-elected in 1931, 1932, 1933 and 1934, and was the Democratic leader in the House of Assembly during 1933, 1934 and 1935 sessions.

He was appointed to the Court of Errors and Appeals in June, 1935 and reappointed in 1941.

Judge Rafferty is Past Exalted Ruler of Bound Brook Lodge of Elks, a member of the State Elks' Association, member of Bishop McFaul Council Knights of Columbus, and of the State Council Knights of Columbus; Exempt

Firemen's Association of Middlesex County and various other civic and social organizations.

Judge Rafferty resides at New Brunswick, New Jersey.



JUDGE FRANK HAGUE, JR.

Honorable Frank Hague, Jr., was born in Jersey City, New Jersey; the son of Mayor Frank Hague of Jersey City.

He was educated at Kingsley, Princeton Preparatory Schools, Princeton University, University of Virginia, and Washington and Lee University Law School. Admitted to the Bar of New Jersey as an attorney in October, 1936.

For a time he served as legal secretary to Supreme Court Justice Porter.

Judge Hague became a member of the Court of Errors and Appeals on March 6, 1939.

Married Kathryn Jordan of Charlottesville, Virginia. Children—two sons: Frank Hague, III born February 14, 1934 and John Harvey Hague born March 7, 1940.

JUDGE LLOYD THOMPSON

Honorable Lloyd Thompson, the son of Winfield and Anna Laura (Worman), was born in New York City on March 17, 1879, and moved to New Jersey with his parents in 1891.

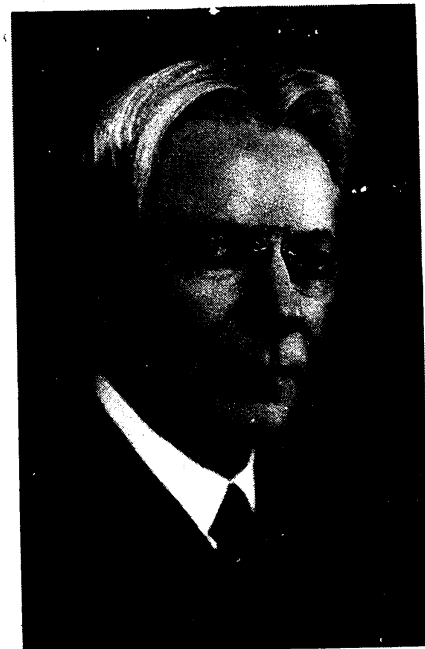
He received his early education in the public schools of New York City and Westfield, New Jersey, and was graduated from Westfield High School in 1897. He then attended the New York University Law School and New York Law School, graduating from the latter in 1900 with the degree of LL.B. Admitted to the Bar of New York in 1900 and practiced there for five years. In 1905 he was admitted to the New Jersey Bar as an attorney and as a counsellor in 1910.

He continued the practice of law in New Jersey until his appointment as Judge of the Union County Court of Common Pleas in 1929; reappointed in 1934 and again in 1939, and continued on that Bench until late in 1940 when he was appointed a lay judge of the Court of Errors and Appeals.

Judge Thompson served two terms in the New Jersey Legislature, 1910-1911, as a member of the House of Assembly; and was a member of the Union County Board of Taxation continuously for sixteen years.

He is a member of Union County, New Jersey State, and American Bar Associations; a member of the First Congregational Church of Westfield; a Mason; and a member of the Royal Arcanum. In politics Judge Thompson has always been a Republican.

Judge Thompson is married and resides in Mountainside, New Jersey. He has his office in Westfield, New Jersey.



VICE-CHANCELLORS

HONORABLE VIVIAN M. LEWIS

Honorable Vivian M. Lewis was born at Paterson, New Jersey.

He holds the degree of LL.D. conferred upon him by Lafayette College, Easton, Pennsylvania.

Prior to being admitted to the Bar he was engaged as correspondent of several New York newspapers.

He was appointed Judge Advocate of the old Second Regiment, National Guard, in July, 1896, and served until the reorganization in 1899, when he was placed on the retired list with the rank of Captain.

He was elected to the City Council of Paterson, New Jersey in 1904 for a full term of office, but resigned when he was appointed Clerk in Chancery by the Governor. In 1904 he was appointed for a full term, where he served until April, 1909, when he was appointed Commissioner of Banking and Insurance. He held this office until April 3, 1912, when he was appointed Vice-Chancellor. He was offered the Chancellorship in 1919, but declined owing to his relationship with Chancellor Walker, the incumbent.

Vice-Chancellor Lewis is a member of the Judicial Council of the State. He was reappointed in 1919, and again in 1926, 1933 and 1940.

He lives at Paterson, New Jersey.



HONORABLE MALCOLM GRISWOLD BUCHANAN

Honorable Malcolm Griswold Buchanan, the son of Henry Clay and Mary Elizabeth (Griswold), was born at Trenton, New Jersey, on March 10, 1881.

He was graduated from the State Model School in 1896; received his A.B. degree at Princeton in 1900, and his LL.B. at Harvard in 1903. Admitted to the New Jersey Bar in 1904.

He began the practice of law at Trenton, New Jersey, and was a member of the firm of James and Malcolm G. Buchanan from 1904 to 1916.

In 1919, he was appointed Vice-Chancellor of the Court of Chancery of New Jersey, reappointed in 1926, 1933, and in 1940 for term ending in 1947.

Vice-Chancellor Buchanan is a member of the New Jersey State, and American Bar Associations; a Republican; Episcopalian; Mason (32nd Degree, Shriner). He also belongs to the Trenton Club; Nassau of Princeton; Princeton Club of New York; and the Harvard Club, Philadelphia.

He married Lily Butler of Washington on June 9, 1906; and they had one daughter, Lily Butler. He married a second time, on July 8, 1931, Lucy Baldwin Walradt Kennedy, and they reside at 8 Newlin Road, Princeton, New Jersey. Office, State House, Trenton, New Jersey.



HONORABLE JAMES F. FIELDER

Honorable James F. Fielder was born in Jersey City, New Jersey, on February 26, 1867. His ancestors on his mother's side were Hollanders and on his father's side English. The families of both his father and mother have been represented in the political history of New Jersey, his paternal grandfather being a member of Assembly from Hudson County in 1871. His father, George B. Fielder, served as Register of Hudson County and was a member of the Forty-third Congress.

He attended the public schools and high school of Jersey City, and graduated from Columbia University Law School in 1887. Admitted to the Bar of New Jersey in 1888.

Vice-Chancellor Fielder served as a member of Assembly from Hudson County in 1903 and 1904; and was elected to the State Senate in 1907 and reelected in 1910, and during 1913 was President of the Senate.

When Governor Wilson resigned his office in March of that year, Senator Fielder became Acting Governor and served until October 28, when he resigned as Senator to take part in the campaign for Governor on the Democratic ticket, and at the regular election he became Governor of the State of New Jersey.

He was appointed Vice-Chancellor in 1919; reappointed in 1926, and again in 1933 and 1940.

His home is at Montclair, New Jersey.

VICE-CHANCELLOR BERRY

Vice-Chancellor Berry was born at West Creek, Ocean County, New Jersey, on January 2, 1877. He is a son of Samuel M. Berry and S. Louisa (Willits) Berry, both now deceased. He was graduated from the University of Pennsylvania Law School in the class of 1902 with the degree of LL.B., and was admitted to the New Jersey Bar in November, 1902 as an attorney, and in February, 1906 as a counsellor. He practiced law in Camden, New Jersey, in association with John A. Riggins, Esq., under the firm name of Berry & Riggins, until shortly before his appointment to the Chancery Bench.

In 1907 he was appointed Judge of the Ocean County Court of Common Pleas by Governor Stokes and served in that position for a full term. In 1912 he was made County Counsel for Ocean County and held this position until his appointment as Vice-Chancellor on May 11, 1925. He was reappointed by Chancellor Walker on May 11, 1932, and again by Chancellor Campbell on May 11, 1939. He resides in Toms River, but sits in Newark and Long Branch. In politics he is a Republican.



HONORABLE JOHN O. BIGELOW

Honorable John O. Bigelow was born in Newark, New Jersey, on September 30, 1883.

He was graduated from Princeton University in 1905 with the degree of Bachelor of Arts, after which he studied law. He was admitted to practice as an attorney in 1908, and as a counsellor in 1911.

He began the practice of law in the city of Newark.

In 1922 he was appointed Prosecutor of Essex County, and in 1927 resigned this office to accept a position with the Public Utility Commission. He was associated with them until April 8, 1930 when he was appointed as a Vice-Chancellor, and was reappointed for a second term in 1937.

During the World War he served with the American Expeditionary Force and was discharged with the rank of Captain.

In 1918 he married Miss Elizabeth Simpson of Frankfort, Ky. They have three children: John, who is a senior at Princeton; Betty, a student at Vassar; and William at the Gunnery School in Connecticut.

His home is at Newark, New Jersey.



HONORABLE ALFRED A. STEIN

Vice-Chancellor Alfred A. Stein was born at Elizabeth, April 9, 1875. He was admitted to the Bar June 8, 1896 as an attorney and admitted as a counsellor June 23, 1909. He is a Special Master in Chancery and a Supreme Court Commissioner.

Vice-Chancellor Stein was a member of the City Council of Elizabeth for four years and President of that body. He was elected Mayor of the City of Elizabeth in November, 1910, for a term of two years. On March 11, 1913, Governor Woodrow Wilson appointed him Prosecutor of the Pleas of Union County. Governor George S. Silzer appointed him as Judge of the Court of Common Pleas on April 1, 1923, to which position he was reappointed by Governor A. Harry Moore April 1, 1928.

He was appointed Vice-Chancellor by Chancellor Edwin Robert Walker, October 1, 1932, and reappointed October 1, 1939, by Chancellor Luther A. Campbell. He holds court in Elizabeth and in Newark. The Vice-Chancellor is a Democrat.





HONORABLE WILLIAM FRANK SOOY

Honorable William Frank Sooy, son of Mark R. and Etta O. Sooy, was born at Mt. Holly, New Jersey, on August 11, 1880.

He received his education at Peddie Institute, Hightstown, New Jersey, and later studied law.

Vice-Chancellor Sooy was director of public safety of Atlantic City from May, 1916 to June, 1919, except for the time he served as Captain of Battery D, First New Jersey Field Artillery and Battery D, 112th Field Artillery.

He was appointed Judge of Circuit Court on November 16, 1926. In 1933 he resigned as Circuit Court Judge to accept an appointment as Vice-Chancellor. In 1940 he was reappointed for a term of seven years.

Vice-Chancellor Sooy is a Republican.
He lives at Atlantic City, New Jersey.

HONORABLE CHARLES M. EGAN

Honorable Charles M. Egan was born in Jersey City, New Jersey. His parents were the late Michael and Maria Egan.

He was educated in the public and parochial schools of Jersey City, and received the degree of Doctor of Laws from St. Peters College, Jersey City, New Jersey. He attended the New York Law School and served his law clerkship in the office of the late Vice-Chancellor, John Griffin.

He was a member of the New Jersey House of Assembly from Hudson County during 1911, 1912 and 1913, and was floor leader of the Democratic majority in the House during his last term. In the Fall of 1913, he was elected to the Senate of New Jersey. He, afterward, served as Assistant Prosecutor of Pleas for Hudson County.

In 1917 he became Assistant Corporation Counsel of Jersey City, from which position he resigned in 1923 to accept the office of Judge of the Court of Common Pleas of Hudson County. He was reappointed to this position in 1928 and again in 1933.

Judge Egan was appointed as Vice-Chancellor on January 15, 1934 for a term of seven years and was reappointed in 1941.

Vice-Chancellor Egan is married; his wife being the former Eleanor Walsh of New York City. They have three children; Virginia Marie, Charles Michael, Jr., and James Patrick Egan. Their home is at Jersey City, New Jersey.



HONORABLE HENRY T. KAYS

Honorable Henry T. Kays, son of Thomas M. Kays and the late Marielle Ryerson Anderson, was born at Newton, New Jersey, September 29, 1878. He graduated from the Newton Public School in 1896 and from the English and Classical School of Newton in 1899. He entered Princeton University the same year and was graduated with the class of 1903. Following this he taught science in the English and Classical School for several years. He studied law in the office of his father and was admitted to the Bar in February, 1910. He married Katharine Van Blarcom of Newton.

During 1910-11 he was a member of the Board of Chosen Freeholders of Sussex County and was afterward County Counsel of said county from 1911-12 and from 1917-35. Vice-Chancellor Kays represented Sussex County in the New Jersey Assembly during 1913, 1914 and 1915. In 1918 he was elected State Senator from Sussex County and reelected in 1921. He was minority leader of the Senate during the 1921 session. During the World War he was Federal Food Administrator for Sussex County. Vice-Chancellor Kays was appointed Judge of the Court of Errors and Appeals of New Jersey in 1924. He resigned his office of State Senator the same day on which he was sworn in as Judge. He resigned from the office of Judge of the Court of Errors and Appeals to accept the appointment of Vice-Chancellor and was sworn into office on June 24, 1935. He is a Democrat. Vice-Chancellor Kays was President of the Merchant's National Bank of Newton and upon its consolidation with the Sussex Bank of Newton became Chairman of the Board of Directors of The Sussex and Merchants National Bank of Newton and afterward its President. Vice-Chancellor Kays is a member of the Princeton Club of New York, the University Club of New York, the Lawyers Club of New York, the Essex Club of Newark, the Society of Colonial Wars in the State of New Jersey, the Sons of the Revolution in the State of New Jersey, New Jersey Historical Society, Saint Nicholas Society of the City of New York, the American Bar Association, the New Jersey Bar Association, the Sussex County Bar Association and other organizations.



HONORABLE ALBERT S. WOODRUFF



Honorable Albert S. Woodruff was born in Hopewell Township, Cumberland County, New Jersey, on April 15, 1886. The son of Albert S. and Josephine (Foster).

He graduated from the high school at Elmer, Salem County, New Jersey, in 1902; graduated from South Jersey Institute, preparatory school, at Bridgeton, in 1902; then registered as a law student in Camden, and, at night, attended Temple University Law School, graduating in 1908, receiving the LL.B. degree. Admitted to the Bar of New Jersey in February, 1908; counsellor in February, 1911. Started practice individually in Camden where he has since remained.

On May 13, 1911, appointed Solicitor of the Camden City Board of Education, resigning November 25, 1912. On November 14, 1912, became Assistant City Solicitor under E. G. C. Bleakly; held that position until a change of administration occurred April 17, 1923. In November, 1924, elected to represent Camden County in the New Jersey Senate. Served that term and then was again reelected from Camden County in November, 1933, and served second term. On April 11, 1939, appointed a Delaware Bridge Commissioner by the New Jersey Legislature; resigned January 13, 1941. County Counsel until December 31, 1940, having been elected to the position by a bipartisan majority of the Board of Freeholders. Appointed a Special Master by Chancellor Edwin Robert Walker on February 24, 1924, and, until the Advisory Masters took over the work, conducted many divorce hearings in Camden. On April 21, 1933, appointed a Supreme Court Commissioner. On January 2, 1941, he was appointed Vice-Chancellor by Luther A. Campbell, Chancellor and was sworn into office on January 6, 1941. Vice-Chancellor Woodruff belongs to the Camden County, New Jersey State, and American Bar Associations. Mason; thirty-second degree, Consistory and Chapter; Moose; Elk; Rotarian; Junior Order of United American Mechanics. Offices are 304 Court House Annex, Camden, New Jersey.

UNITED STATES CIRCUIT COURT OF APPEALS

HONORABLE WILLIAM CLARK



Honorable William Clark was born at Newark, New Jersey, on February 1, 1891; the son of J. William and Margaretta (Cameron).

He graduated from Newark Academy in 1904 and from St. Mark's School in 1908; received his B.A. degree at Harvard in 1911, his Master's in 1912 and his LL.B. in 1915. Admitted to the New Jersey Bar as an attorney in 1916 and as a counsellor-at-law in 1920.

He began the practice of law in 1920 and was a member of the firm of Lindabury, Depue and Faulks until 1923.

He was appointed Judge of the New Jersey Court of Errors and Appeals in 1923; served as United States District Court Judge of New Jersey from 1925 to 1938; and has been Judge of United States Circuit Court of Appeals for the Third Circuit since July 5, 1938.

He entered First Reserve Officers Training Corps at Fort Meyer, Virginia in May, 1917; commissioned Second Lieutenant in August, 1917, and assigned to the 314th Field Artillery. He became a First Lieutenant in January, 1918, and was promoted to the rank of Captain in September, 1918. He saw overseas service for one year and, holds a silver star citation "for gallantry in action". He is a Major, Field Artillery, Officers Reserve Corps.

Judge Clark is a Trustee of the New Jersey Historical Society, and of the New Jersey Museum Association.

He is a member of Essex County, and New Jersey State Bar Associations; also the Association Bar, City of New York and the American Law Institute. He is also a

member of the American Society of International Law and the American Academy of Political Science. Judge Clark is a Republican and a Presbyterian.

Judge Clark married Marjorie Blair on September 20, 1913, and they have three children: Anne, John William, and Ledyard B. The family residence is at 117 Library Place, Princeton, New Jersey.

UNITED STATES DISTRICT COURT JUDGES

HONORABLE GUY LEVERNE FAKE

Honorable Guy Leverne Fake was born at Cobleskill, New York, on November 15, 1879. He is descended from Revolutionary stock on both sides of his family.

He received his early education at Rutherford High School and New York Preparatory School, and graduated from New York University Law School in 1903 with the degree of LL.B.

He began the practice of law at Rutherford, New Jersey.

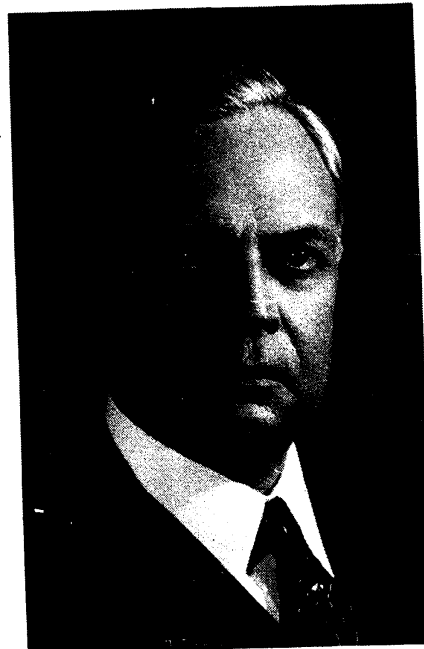
He served as a member of the Assembly from Bergen County during 1907 and 1908. In 1909 he was appointed by Governor Fort as Judge of the District Court of the Second Judicial District of Bergen County, and was re-appointed by Governor Fielder in 1914, and by Governor Edge in 1919.

In 1914 he was admitted to practice in the United States Supreme Court, and in February, 1929, President Coolidge appointed him United States District Court Judge for the District of New Jersey.

Judge Fake was appointed a Supreme Court Commissioner in 1926.

He is a member of the John T. Hilton Camp, No. 3, United Spanish War Veterans and for many years was Judge Advocate of the Spanish War Veterans, Department of New Jersey. He is also a member of Boiling Springs Lodge, No. 152, F. & A. M., and of the First Presbyterian Church of Rutherford; Phi Gamma Delta fraternity and Theta Sigma Lambda fraternity; Bergen County Bar Association (honorary member).

Judge Fake married Grace Elizabeth Mucklow, daughter of Rev. William B. Mucklow of Hartford, Connecticut, and they have two children. The family home is at Rutherford, New Jersey.



HONORABLE JOHN BOYD AVIS

Judge John Boyd Avis was born in Deerfield, Cumberland County, New Jersey, July 11, 1875, son of John H. and Sarah Barker Avis. He was educated in the public schools of Deerfield Township and studied law in Bridgeton for three years and completed a clerkship with Hon. David O. Watkins, former acting Governor of New Jersey, at Woodbury. He was admitted to the New Jersey Bar as an attorney in February, 1898, and as a counsellor three years later. Mr. Avis following his admission to the Bar continued an active general law practice. He served as attorney for the County of Gloucester, the City of Woodbury, and other boroughs and townships in Gloucester County.

In 1901 he was first elected to the General Assembly, serving during the sessions of 1902, 1903, 1904, and 1905. In 1904 and 1905 he was Speaker of the House of Assembly. In 1905 he was elected to the Senate from Gloucester County and served one term of three years.

He is a member of the Presbyterian Church of Woodbury; member of Florence Lodge, No. 87, F. & A. M., Woodbury, which lodge he served as Worshipful Master in 1916, and is also a member of the New Jersey State Bar Association and of the American Bar Association.

He attended the Republican National Convention in 1912 at Chicago as delegate from the First Congressional District, and was a Republican Presidential Elector in 1928.

On June 8, 1938, the South Jersey Law School at Camden conferred upon him the honorary degree of Doctor of Laws.

Judge Avis married Minnie Genung Anderson, of New York City, a daughter of Charles H. and Ruth A. Anderson, on September 27, 1899. Mrs. Avis died on June 6, 1940.

Judge Avis lives at 48 Newton Avenue, Woodbury.

He was appointed a United States District Judge for New Jersey by President Hoover, October 20, 1929.



HONORABLE THOMAS GLYNN WALKER



Honorable Thomas Glynn Walker was born at Harrison, New Jersey, on December 7, 1899.

He received his education at St. Benedict's Preparatory School, Seton Hall College and Fordham University. Admitted to the New Jersey State Bar as an attorney in 1925, and as a counsellor in 1929.

He was associated with the firm of Wolber and Gilhooly, and later was a member of the firm of Skeffington and Walker, counsellors-at-law, Newark, New Jersey.

Judge Walker was elected to the Assembly for the first time at the election in November, 1923, and was reelected in 1933, 1934, 1935, 1936 and 1937, and during the year 1937 he was the Speaker of the House of Assembly.

On November 30, 1937, Governor Hoffman appointed him to the Court of Errors and Appeals, and Governor Moore appointed him to the Hudson County Court of Common Pleas in February, 1939. On December 20, 1939, he was appointed by President Roosevelt to the United States District Court of New Jersey.

Judge Walker was a member of the faculty of John Marshall College of Law of Jersey City, and also Mercer Beasley School of Law, Newark, New Jersey.

He is a member of Hudson County, New Jersey State, and American Bar Associations; also Essex County Lawyers Club, Academy of Political Science and the American Judicature Society.

Judge Walker lives at Arlington, New Jersey.



HONORABLE PHILLIP FORMAN

Honorable Phillip Forman was born in New York City, on November 30, 1895; the son of Morris and Tilly (Peters).

He was graduated from Temple University in 1919 with the degree of LL.B. Admitted to the New Jersey Bar in 1917.

Mr. Forman began the practice of law at Trenton, New Jersey, and was a member of the firm of Forman and Levy.

He served as Assistant United States Attorney for the District of New Jersey from 1923 to 1928; United States Attorney from 1928 to 1932; and has been Judge of the United States District Court of New Jersey since 1932.

He served as Chief Petty Officer in the United States Navy during the World War. He was Commander, Department of New Jersey American Legion during 1923 and 1924.

Judge Forman is a member of the Board of Managers of New Jersey State Hospital at Trenton.

Judge Forman married Pearl Edith Karlberg on April 12, 1937, and they reside at 5 Belmont Circle, Trenton, New Jersey. His office is in the Federal Building, Trenton.

HONORABLE WILLIAM F. SMITH

Honorable William F. Smith of Newark, New Jersey is the most recent appointment to the United States District Court Bench.

Judge Smith has his office at 329 Federal Building, Newark, New Jersey.



UNITED STATES DISTRICT ATTORNEY

HONORABLE CHARLES M. PHILLIPS

Honorable Charles M. Phillips was born at Hammonton, New Jersey.

He attended Hammonton Grammar School, Temple University Preparatory School, and studied law at Temple University Law School, where he had the degree of LL.B. conferred on him in 1921. Admitted to the New Jersey Bar in 1921 and became a counsellor in 1924.

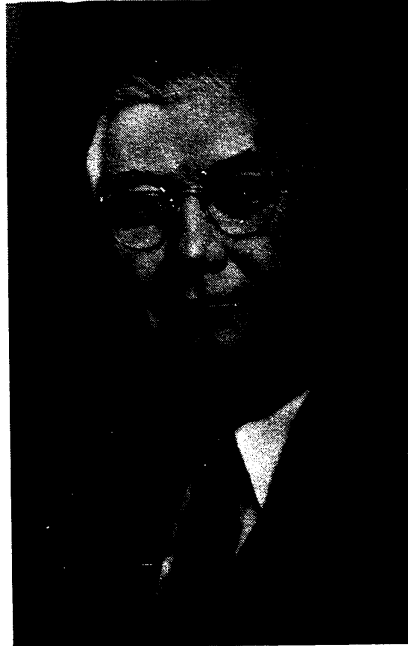
Mr. Phillips worked on a farm in Hammonton from 1900 to 1920, with the exception of the time he spent in a law office as a student. He also attended night school in Philadelphia for seven years prior to 1921.

He has been a member of Hammonton Board of Education for 18 years; served on the Atlantic County Vocational Board for 15 years; and Atlantic County representative on the Executive Committee of State Federated Boards of Education.

Mr. Phillips was appointed as United States District Attorney by President Roosevelt in 1941.

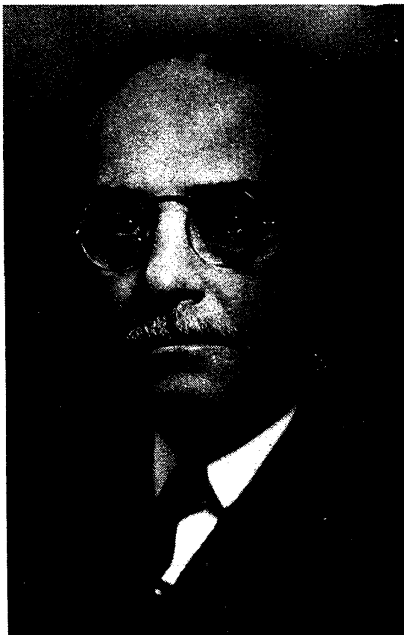
He is a member of St. Marks Episcopal Church of Hammonton; and his fraternal affiliations are: Hammonton Kiwanis Club (past President); Kiwanis International (past Lieutenant Governor, Delsea Division); member Riverton Country Club of Riverton, New Jersey. His Masonic activities are: District Deputy, 23rd Masonic District; Past Master, M. B. Taylor Lodge No. 141, Free and Accepted Masons of Hammonton; Excelsior Consistory, Camden, New Jersey (Trustee); Crescent Temple, Trenton, New Jersey (Executive Committee); Trinity Chapter, Trinity Council, and Atlantic Commandery of Atlantic City, New Jersey; also Atlantic City Forest No. 11, Tall Cedars (Past Grand Tall Cedar); Al-Time Grotto of Atlantic City, and Atlantic City Shrine Club.

Mr. Phillips married Emelie K. Morris of Philadelphia, Pennsylvania, in 1917, and they have three children: Emelie M., Marthann and Charles M., Jr.



CIRCUIT COURT JUDGES

HONORABLE A. DAYTON OLIPHANT



Honorable A. Dayton Oliphant was born at Trenton, New Jersey, on October 28, 1887; the son of Henry Duncan and Elizabeth Vande Veer (Dayton).

He was a student at Rand Preparatory School, Trenton, New Jersey, from 1900 to 1905; attended Princeton University during 1905 and 1907, and the University of Pennsylvania Law School in 1911. Admitted to the Bar of New Jersey in 1911.

He was engaged in the practice of law at Trenton, New Jersey from 1911 to 1927. He served as a representative from Mercer County in the New Jersey Legislature during the sessions of 1915-16-17, being majority leader the last year.

Mr. Oliphant was Prosecutor of Pleas of Trenton for one term, from 1918 to 1923; and has been Judge of the Circuit Court of Trenton since 1927.

Judge Oliphant was a Captain in the Judge Advocate's Department in the New Jersey National Guard from 1916 to 1918.

He was Chairman of Mercer County, New Jersey, Republican Committee from 1914 to 1918, and Vice-Chairman of the Republican State Committee from 1916 to 1921.

Judge Oliphant is a member of Mercer County, New Jersey State, and American Bar Associations; and the Phi Delta Theta fraternity. He is a Republican, Presbyterian and a Mason (32nd degree, Shriner). His clubs are: Tiger Inn, Nassau, Nassau Gun of Princeton, and the

Carteret and Trenton Country Clubs of Trenton, New Jersey.

He married Marguerite Broughton on June 21, 1924; and they have their home at 43 Cleveland Lane, Princeton, New Jersey. Judge Oliphant's chambers are in the Court House, Trenton, New Jersey.

HONORABLE WILFRED H. JAYNE



Honorable Wilfred H. Jayne was born at Setauket, Long Island, New York, on February 24, 1888. In 1890 his parents became residents of Elizabeth, New Jersey, moving to Lakewood, Ocean County, in 1898.

He was educated in the Lakewood public schools, the Pingry School at Elizabeth, and also Princeton University and New York Law School. He served his law clerkship in the offices of the late Vice-Chancellor John Griffin at Jersey City. Admitted to the Bar of New Jersey as an attorney at the June term, 1911, and as a counsellor-at-law at the June term in 1914.

Judge Jayne began the practice of law at Lakewood, New Jersey.

For several years he was President of the Lakewood Board of Education.

In 1922, he was appointed Prosecutor of the Pleas of Ocean County, which office he held for five years. In 1923 he was appointed Special Deputy Attorney General and again in 1924.

At the May primary in 1931, he defeated former Assemblyman Joseph M. Thompson for the Republican nomination for Senator, and at the general election, he defeated the Democratic candidate.

In 1932 he was appointed as Circuit Court Judge, and temporarily assigned to Union and Middlesex County Circuits; in 1933 and again in 1940 he was nominated and confirmed for full terms, and is now permanently assigned to the Atlantic and Cape May Circuits.

Judge Jayne resides at Lakewood and Atlantic City, New Jersey, and his offices are at 317 Guarantee Trust Building, Atlantic City, New Jersey.

HONORABLE JOHN CARLYLE BARBOUR

Honorable John Carlyle Barbour was born in Haledon, Passaic County, New Jersey, on April 18, 1895; the son of the late William J. and Anna Barbour, his father having served in the Assembly of 1914 and 1915.

He graduated from New York Law School in 1917 with the degree of Bachelor of Laws. He also took a short course in law at Kings College, London University, in 1919. Admitted to the New Jersey Bar in December, 1916, shortly after the beginning of his last year in law school, and was admitted as a counsellor-at-law three years later.

Judge Barbour entered the United States Army on April 1, 1918, and served overseas with the 312th Infantry, 78th Division, as battalion Sergeant-Major, and saw active service in the St. Mihiel and Meuse-Argonne fronts. He received his honorable discharge on August 1, 1919.

For a number of years he has been President of the Clifton National Bank, at Clifton, New Jersey, which institution he was instrumental in organizing.

Judge Barbour served in the Assembly in 1929, 1930, 1931 and 1932, and in the Senate from 1933 to 1936. He was the majority leader in 1935 and President of the Senate and Acting Governor in 1936.

He was appointed Circuit Court Judge on June 1, 1936.

Judge Barbour is a Past Master of Clifton Lodge No. 203, F. & A. M. He is also a member of the Scottish Rite Bodies, of Salaam Temple, A. A. O. N. M. S.; American Legion, Veterans of Foreign Wars, 312th Infantry Association, and the Sons of the American Revolution.

In 1921, Judge Barbour married Mabel E. Bennett, and they have two children: John Carlyle, Jr., and Mary Bennett. Judge Barbour and his family reside at Clifton, New Jersey.



HONORABLE FRANK L. CLEARY

Honorable Frank L. Cleary was born at Lambertville, New Jersey, on August 4, 1887.

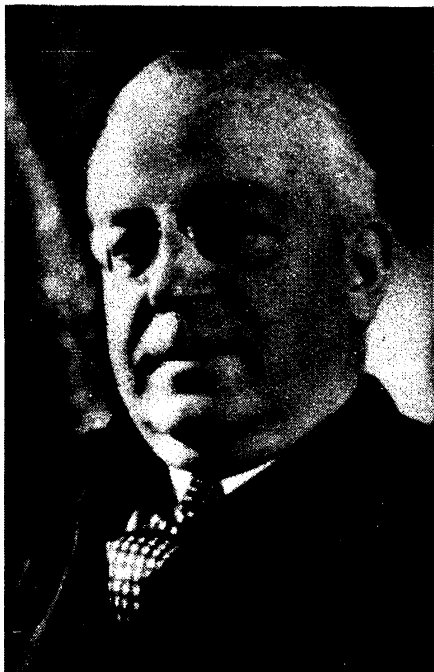
He graduated from Lambertville High School in 1904, Trenton High School in 1907, and from the New York University in 1911. Admitted to the New Jersey Bar as an attorney in February, 1912, and as a counsellor in February, 1915.

In 1920 he was appointed Common Pleas Judge of Somerset County, and was reappointed to that office in 1925. Judge Cleary was made a Circuit Court Judge in 1927 for a full term of seven years and received a reappointment in 1934 and 1941.

Judge Cleary's Circuit consists of Union County, and he lives at Somerville, New Jersey.



HONORABLE JOSEPH L. SMITH



Honorable Joseph L. Smith was born on December 6, 1891; the youngest son of former United States Senator James Smith, Jr., and Kate (Nugent).

He attended Newark Academy; graduated from Princeton University in 1913 with the degree of A. B., and from New York University Law School with the degree of J.D. in June, 1916. Admitted to practice in New Jersey as an attorney in June, 1916, and as a counsellor-at-law, three years later. He served his clerkship with the firm of Lindabury, Depue and Faulkes of Newark, New Jersey.

At one time he was a partner of the Honorable Merritt Lane, and Judge Charles F. Lynch, the firm name being Lane, Lynch and Smith.

He served as Prosecutor of the Pleas of Essex County for five years; reappointed in 1932, and served until March 1933, when he was appointed Judge of the Circuit Court. Reappointed to this office in March, 1940.

He is a Special Master in Chancery, Supreme Court Commissioner and was formerly with the Alien Property Custodian, Washington, D. C. He served as an Assistant United States Attorney for the State of New Jersey, and also as Assistant Prosecutor of the Pleas for Essex County.

Judge Smith is a member of Essex County (former Treasurer for eight successive years), New Jersey State, and American Bar Associations, and the International Association of Penal Law. Also Legal Aid Society of Essex County (former Treasurer). Formerly recording secretary and member of the Lawyers Democratic Club of Essex

County. He is also affiliated with the legal fraternity Phi Delta Phi and Theta Nu Epsilon, as well as the Princeton Club of Newark (former Treasurer) and the Princeton Club of New York.

Judge Smith married Florence FitzSimons, daughter of the late James M. FitzSimons, Chief Justice of the City Court of New York. They have one child, a daughter. The family home is at 655 Lake Street, Newark, New Jersey.

HONORABLE HENRY E. ACKERSON, JR.

Honorable Henry E. Ackerson, Jr., was born in Holmdel Township, near Hazlet, Monmouth County, New Jersey, on October 15, 1880.

In 1890 his parents moved to Keyport, New Jersey, where he graduated from high school in 1898. He later entered the Packard School, New York City. After his graduation there, he was engaged in business for a time, but later continued his education at Senftner Preparatory School in New York City. He entered New York Law School in 1900 where he graduated with the scholarship prize of appointment as lecturer on pleading and practice at the law school, which position he held for two years. He was admitted to the Bar of New Jersey as an attorney on March 7, 1904, and became a counsellor and Master in Chancery on November 28, 1909.

Judge Ackerson began his practice at Keyport, New Jersey.

For seven years he was special counsel to the Board of Chosen Freeholders of Monmouth County. He is a special Master in Chancery, a Supreme Court Commissioner and a member of the Judicial Council of the State. He is also a member of the Board of Managers of the New Jersey State Home for Boys.

In 1914 he was elected to represent Monmouth County in the State Senate, and was reelected in 1917. He resigned from this office in 1919 to accept an appointment as Judge of the Court of Errors and Appeals. He held this office until January 28, 1924 when he was appointed as a Circuit Court Judge for a full term of seven years. He was reappointed in 1931 and 1938.

Judge Ackerson's circuit covers Hudson County, and his home is at Keyport, New Jersey.

HONORABLE JOSEPH GUSTAVE WOLBER

Honorable Joseph Gustave Wolber was born at Newark, New Jersey, on May 2, 1883, and has been a life-long resident of Essex County.

He graduated from Newark High School and studied law at the New York University, where he graduated in 1905. He was admitted to the New Jersey Bar as an attorney the same year, and as a counsellor in 1908.

In November 1935, the New Jersey State Teachers' Association conferred upon Judge Wolber its annual medal for distinguished service to education; and on June 1, 1938, Seton Hall College conferred upon him the honorary degree of LL.D.

He is a Special Master in Chancery and a Supreme Court Commissioner.

Judge Wolber was elected to the Senate to represent Essex County the first time in November, 1926; reelected in 1929 and in 1932. He was selected as the Republican Senate leader for the 1930 session, was President of the Senate during the 1931 session. On October 15, 1931, he assumed the duties of Acting Governor.

On June 25, 1935, he resigned as State Senator to accept the appointment of Circuit Court Judge, and assumed those duties on June 27, 1935. His term will expire in 1942, and his circuits include Passaic and Sussex counties.

Judge Wolber was President of the Lawyers Club of Essex County from 1925 to 1926, and as State Senator sponsored the law creating the Judicial Council of the State of New Jersey. He is a member of the American Law Institute.

Judge Wolber resides at 205 Fernwood Avenue, Upper Montclair, New Jersey.



HONORABLE THOMAS BROWN

Honorable Thomas Brown of Locust, New Jersey, was graduated from the New York Law School in 1905 with the degree of LL.B. He was admitted to the Bar of New Jersey as an attorney in the February term, 1907, and as a counsellor-at-law three years later.

Judge Brown was chairman of the Democratic State Convention in 1920, and was elected a delegate to the Democratic National Convention from the Third Congressional District in that year. In 1921 he served as Democratic leader in the Senate.

Judge Brown was appointed to the Circuit Court Bench for a full term on July 1, 1930, and in 1937 was appointed for a second term of seven years. His circuit comprises the county of Hudson.

He is the author of Brown on "Public Utility Law of New Jersey," which deals with the statutes, rules of procedure and decisions of the State and United States Courts as pertaining to public utility regulation.

Judge Brown's home is at Locust, New Jersey.



HONORABLE J. WALLACE LEYDEN

Honorable J. Wallace Leyden was born in New York City, on December 5, 1896.

He received his LL.B. degree at Fordham University.

Judge Leyden served as Judge of the Court of the Second Criminal Judicial District of Bergen County from 1926 to 1933; Judge of the Court of Common Pleas of Bergen County from 1933 to 1938; and was appointed to the Circuit Court for a term extending to February 14, 1945.

Judge Leyden resides at Hackensack, New Jersey.

HONORABLE WILLIAM A. SMITH

Honorable William A. Smith was born at Newark, New Jersey, on December 1, 1883.

He received his preliminary education at the Newark Academy, and studied law in the office of Coult and Howell. Admitted to the Bar of New Jersey as an attorney in 1904, and as a counsellor in 1907. He was admitted to practice in the United States Supreme Court in February, 1919.

He began his practice as a member of the firm of Coult and Howell, and later upon the appointment of Mr. Howell as a Vice-Chancellor, the firm name became Coult and Smith. He was actively engaged in the practice of law until March, 1924 when he received the appointment of Circuit Judge for a full term of seven years. He was reappointed in 1931 and again in 1938.

During the World War, Judge Smith was a First Lieutenant in the Chemical Warfare Service. He was stationed at Camp Humphreys, Virginia (Engineers Officers Training School), and at Camp Kendrick, Lakehurst, New Jersey.

He is a member of the New Jersey State, and American Bar Associations; the Military Order of the World War, and a number of other organizations. He is a Republican.

Judge Smith resides at Sea Girt, New Jersey.

HONORABLE SAMUEL M. SHAY

Honorable Samuel M. Shay was born at Marlton, Burlington County, New Jersey.

He is a graduate of The Catholic University of America, Washington, D. C. Admitted to the New Jersey Bar as an attorney in February, 1918, and as a counsellor in June, 1921.

Judge Shay was appointed a member of the Interstate Bridge and Tunnel Commission in February, 1920, where he served until his appointment as Common Pleas Judge of Camden County, in 1922. He was reappointed to this position in 1927 and in 1932. He was appointed to the Circuit Court Bench in May, 1934 and reappointed in May, 1941.

His home is at Merchantville, New Jersey.



HONORABLE EDWIN C. CAFFREY

Honorable Edwin C. Caffrey was born in Newark, New Jersey.

He received his education in the Newark Public Schools, the New York University and the Washington and Lee University. He also studied law in the office of Cravath, Henderson and de Gersdorf, New York City. Admitted to the New Jersey Bar in February, 1910, and as a counsellor in February, 1914.

Judge Caffrey was engaged in the practice of Law in Newark.

In 1921 he became Common Pleas Judge of Essex County and was reappointed in 1926. In 1927 he was appointed a Circuit Court Judge, and again appointed in 1934.

Judge Caffrey is a member of Phi Beta Kappa, Kappa Sigma and the Delta Theta Phi fraternities.

He resides at South Orange, New Jersey.



HONORABLE V. CLAUDE PALMER

Honorable V. Claude Palmer was born at Tuckerton, New Jersey.

He graduated from the New Jersey State Normal School at Trenton, in 1897, after which he taught school for four years and then took up the study of law with Walter A. Barrows at Mount Holly. Admitted to the New Jersey Bar as an attorney in 1904 and as a counsellor in 1907.

He was engaged in the practice of law at Mount Holly until appointed as Circuit Court Judge in 1933. His circuit covers the county of Camden.

Judge Palmer is a member of the Burlington County, New Jersey State, and American Bar Associations; and the Union League of Philadelphia.

Judge Palmer resides at Moorestown, New Jersey.

HONORABLE ROBERT V. KINKEAD

Honorable Robert V. Kinkead was born at Jersey City, New Jersey, and is the son of the late Thomas C. and Nora (Barrett).

He received his preliminary education at St. Joseph's Parochial School and St. Peter's Preparatory, Jersey City, and graduated from Fordham Law School in June, 1914. Admitted to the New Jersey Bar in November, 1914.

Judge Kinkead was appointed to the Common Pleas Bench of Hudson County, on April 1, 1923, and reappointed as Judge of that Court in 1928, 1933 and 1938. In February, 1939, he became Circuit Court Judge for a full term of seven years.

Judge Kinkead resides in Jersey City, and his circuit covers the counties of Monmouth and Hunterdon.